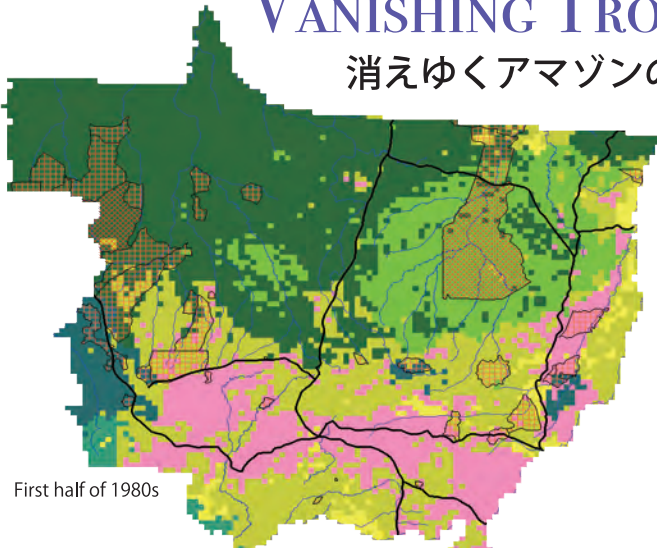


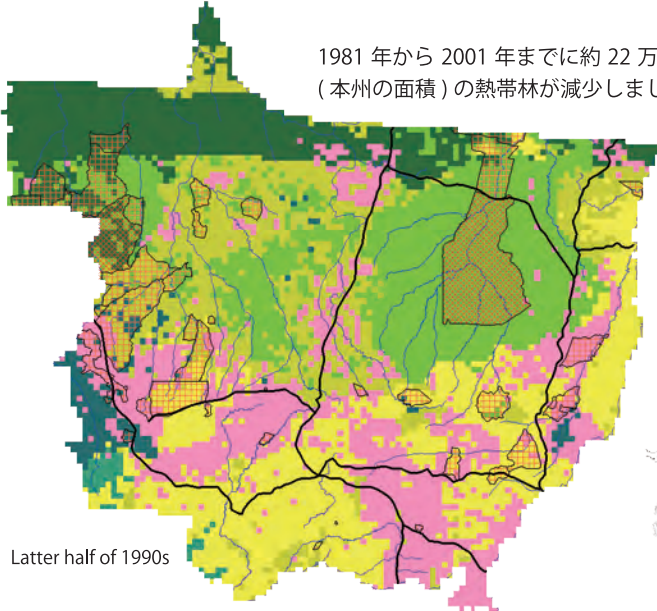
VANISHING TROPICAL FOREST IN AMAZON

消えゆくアマゾンの熱帯林



First half of 1980s

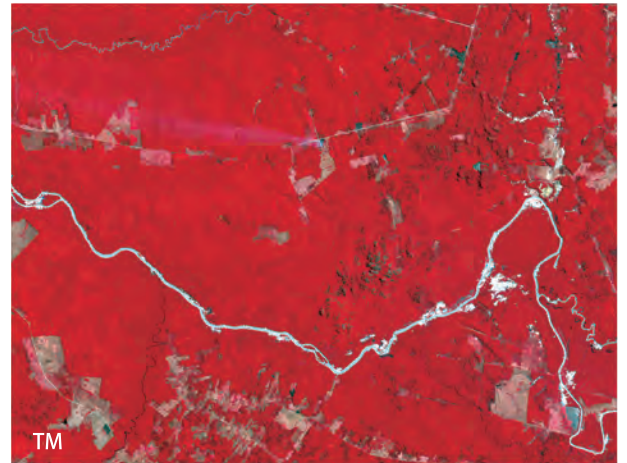
Digital Vegetation Model Maps of 1981 and 2001 in Mato Grosso using NOAA/AVHRR data and GIS. Blue lines denote rivers, black bold lines are federal main roads, red diagonal grids are Parks inhabited by indigenous people and orange normal grids are Areas inhabited by indigenous people.



Latter half of 1990s

1981年から2001年までに約22万km²
(本州の面積)の熱帯林が減少しました。

- Evergreen Broadleaf Forests
- Broadleaf and Seasonal Forests
- Semi-deciduous Seasonal Forests
- Savanna Woodlands
- Savanna Grasslands
- Savanna
- Deeply Altered Areas



TM

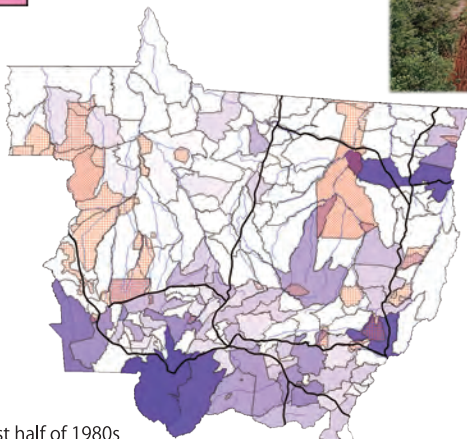


ASTER

Landsat TM captured the top image of part of Mato Grosso on August 6, 1992. The ASTER on Terra satellite captured the bottom image of the same area on July 28, 2006.



Plantation

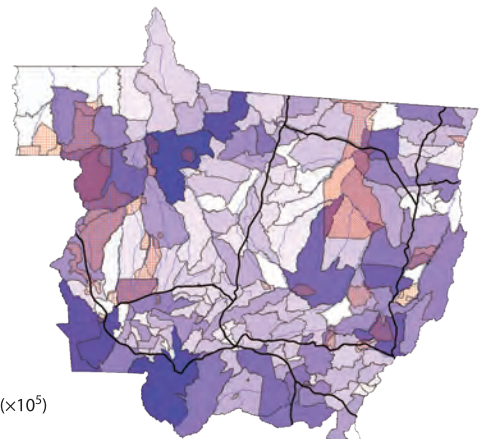


First half of 1980s



穀物メジャーによって管理された
トウモロコシ畑

牧牛頭数分布図 (5年平均)
(Number of cattle)



Latter half of 1990s

森林伐採の主な原因は牧場の開発です。広大な森林は伐採され、牧場や大豆・トウモロコシ畑などの農牧地へ変化しました。

The distribution map in 5-year mean cattle counts in every municipal district in Mato Grosso.